



Monaco 218 Fern



Monaco 807 Mushroom



Monaco 624 Mulberry



Monaco 609 Rose



Monaco 823 Chablis



Monaco 158 Duck Egg/Cream



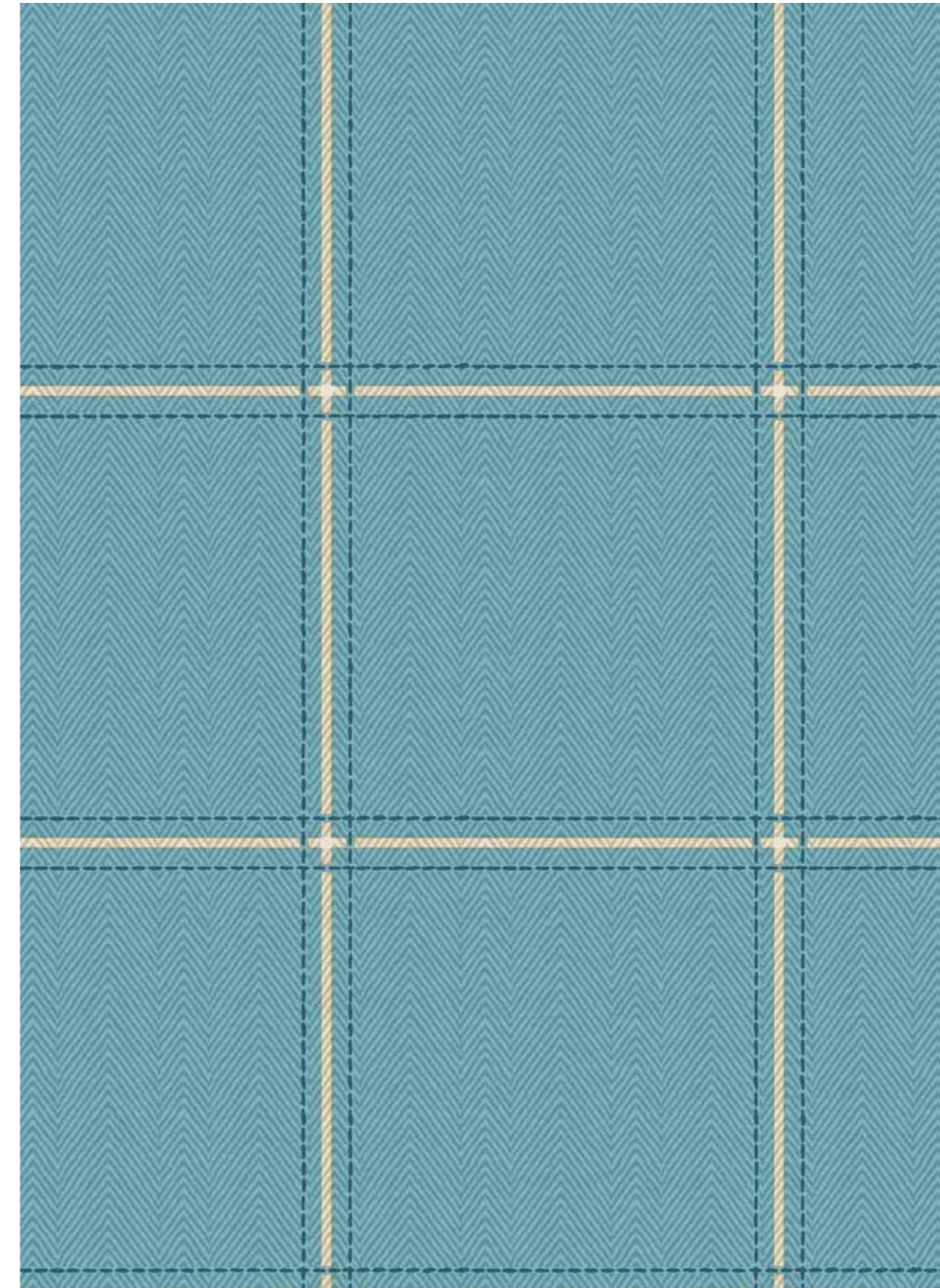
Monaco 131 Azure



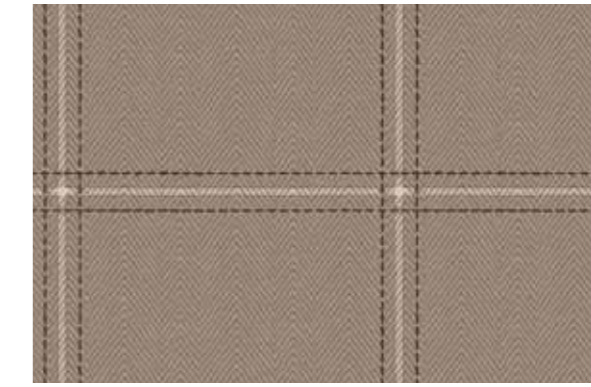
Monaco 500 Grey



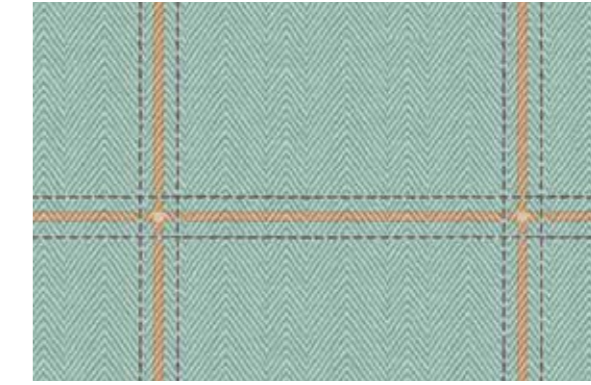
Monaco 995 Black/Chalk



Milan 131 Azure



Milan 807 Mushroom



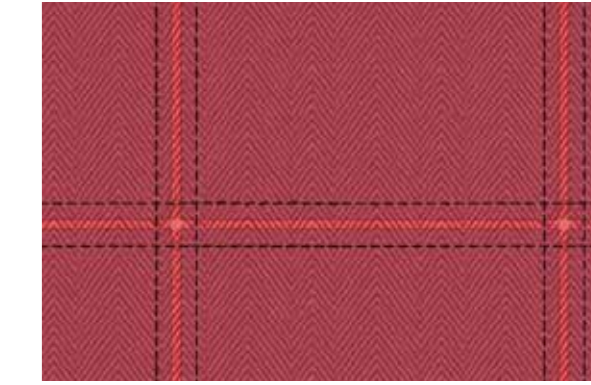
Milan 158 Duck Egg Cream



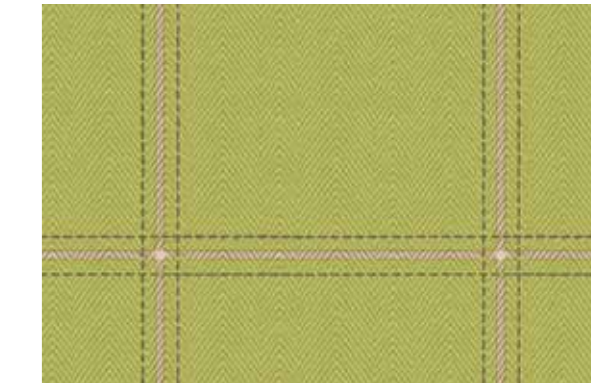
Milan 197 Pigeon Grey



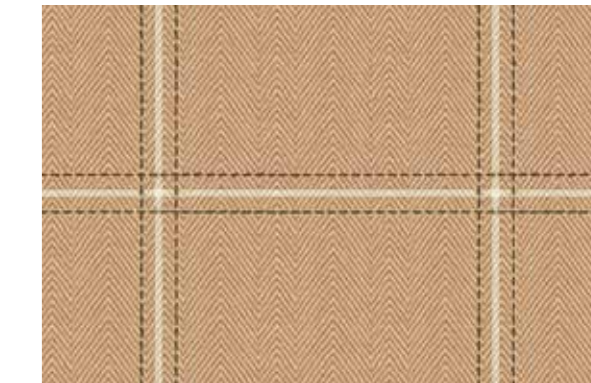
Milan 624 Mulberry



Milan 609 Rose



Milan 208 Fern Green



Milan 834 Honey

MONACO & MILAN



HIGHLAND PRINT™

COMPOSITION	APPLICATION	WEIGHT	WIDTH	ABRASION	LIGHT FASTNESS	COLOUR FASTNESS	WATERPROOF	FLAMMABILITY RATINGS									
								BS7176 Hydrostatic head > 1 metre	BS6892 Part 2 Ignition Source 5	EN 1021-1/2	M1 France	B1 Germany	NFPA 260 USA	CA1 TB 116 & 117	Marine Standard IMO A 582 (16)		
100% FR Polyester Printed Waterproof Upholstery	Contract & Heavy Domestic Upholstery	Approx 430g/m ²	Approx 138cms (54.3")	40,000 Martindale Rubs	Grade 4-5	Grade 4-5	•	•	•	•	•	•	•	•	•	•	

ADDITIONAL	<ul style="list-style-type: none"> Stain resistant finish Anti-Fungal and Anti-Microbial Breathable Waterproof <p>The unique textured quality of Highland Print will enhance many other designs from our printed collections. Samples available upon request.</p> <p>For more colours of Highland plain dyed (012) and technical information, please request a pattern card or visit www.panaz.com</p>
RECOMMENDED CLEANING	<ul style="list-style-type: none"> Upholstered furniture should be vacuumed/cleaned regularly to remove dust/surface grit particles and prevent build-up of soiling. Take care not to cause abrasive damage. Most stains can be removed by wiping clean. Microfibre cloths are extremely effective without soap, which is helpful as soap can clog your fabric. Remove spillages promptly (within 15 mins) with an absorbent dry cloth. For heavier soiling use a soft brush with care to avoid abrasive damage to surface and tepid soapy water (non-alkaline). Rinse clean with water ensuring product residues are removed as this inhibits the stain repellent. Dry with an absorbent cloth. Bodily fluids should be removed promptly with cold water and then cleaned as above. Water and oil based stains may be removed by using most waterbased household proprietary spray cleaning agents, following instructions carefully. * Extreme soiling may be cleaned with a 5% Sodium Chlorite (bleach) solution. Do not machine wash, fully immerse or dry clean. Do not apply other chemicals to the fabric.
CONTINUITY	Although every effort is made to ensure that fabrics ordered match the colours in this pattern card, slight variations may occur from batch to batch.
Please note Panaz reserve the right to update product specification at their discretion.	

PANVELLE STRETCH™

COMPOSITION	APPLICATION	WEIGHT	WIDTH	ABRASION	LIGHT FASTNESS	COLOUR FASTNESS	WATERPROOF	FLAMMABILITY RATINGS									
								BS7176 Hydrostatic head > 1 metre	BS6892 Part 2 Ignition Source 5	EN 1021-1/2	M1 France	B1 Germany	NFPA 260 USA	CA1 TB 116 & 117	Marine Standard IMO A 582 (16)		
Filament Polyester with Microporous Polymers and FR Coating	Contract & Heavy Domestic Upholstery	Approx 400g/m ²	Approx 137cms (54")	60,000+ Martindale Rubs	Grade 6	Grade 4-5	•	•	•	•	•	•	•	•	•	•	

ADDITIONAL	<ul style="list-style-type: none"> Stain resistant finish Anti-Fungal and Anti-Microbial Breathable Waterproof Multi-Directional Stretch
RECOMMENDED CLEANING	<ul style="list-style-type: none"> Upholstered furniture should be vacuumed/cleaned regularly to remove dust/surface grit particles and prevent build-up of soiling. Take care not to cause abrasive damage. Most stains can be removed by wiping clean. Microfibre cloths are extremely effective without soap, which is helpful as soap can clog your fabric. Remove spillages promptly (within 15 mins) with an absorbent dry cloth. For heavier soiling use a soft brush with care to avoid abrasive damage to surface and tepid soapy water (non-alkaline). Rinse clean with water ensuring product residues are removed as this inhibits the stain repellent. Dry with an absorbent cloth. Bodily fluids should be removed promptly with cold water and then cleaned as above. Water and oil based stains may be removed by using most waterbased household proprietary spray cleaning agents, following instructions carefully. * Extreme soiling may be cleaned with a 5% Sodium Chlorite (bleach) solution. Do not machine wash, fully immerse or dry clean. Do not apply other chemicals to the fabric. * Washable with a 5% bleach solution, Chlor Clean or Haz Tabs
CONTINUITY	Although every effort is made to ensure that fabrics ordered match the colours in this pattern card, slight variations may occur from batch to batch.
Please note Panaz reserve the right to update product specification at their discretion.	

PRINTED PATTERNED WATERPROOF UPHOLSTERY

Now you can select from the designs and colours overleaf and apply to the upholstery fabric of your choice.

Select your print base cloth from three exceptionally high performance upholstery fabrics.

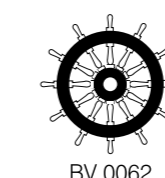
Consider Panvelle™ and Panvelle Stretch™, super soft pile fabrics which established a benchmark in healthcare upholsteries or Highland Print™, our market leading, classic textured fabric.

New to this family is Panvelle Wash™. Just throw this in the washing machine at 40 degrees.

All are available within 5 days and at minimums of 4 metres.

Why buy me?

HIGHLAND PRINT™	PANVELLE WASH™	PANVELLE STRETCH™
Classic texture	Super Soft	Super soft
Waterproof	Waterproof	Waterproof
Anti-Microbial	Anti-Microbial - Shield Plus™	Anti-Microbial - Shield Plus™
Flame retardant	Flame retardant	Flame retardant
Stain resistant	Stain resistant	Stain resistant
Bleach cleanable* (See recommended cleaning instructions)	Bleach cleanable* (See recommended cleaning instructions)	Bleach cleanable* (See recommended cleaning instructions)
	Machine washable	Pressure Relief Stretch



Head Office.
Panaz Ltd, Spring Mill, Fence,
Near Burnley,
Lancashire, BB12 9HP
England
Tel: +44 (0) 1282 696969
Fax: +44 (0) 1282 611519
email: admin@panaz.co.uk

Panaz
For further information please visit
www.panaz.com

Panaz (USA) Inc
2102 Business Center Drive
Suite 215B
Irvine, CA 92612
USA
Tel: +1 949 253 4163
Fax: +1 949 253 4167
email: sales@panaz.com

PZ 12/13

Panaz
Innovation in contract fabrics

